

hindsgaul[®]

by RETAILMENT A/S

in positions

vol.1
PORTFOLIO

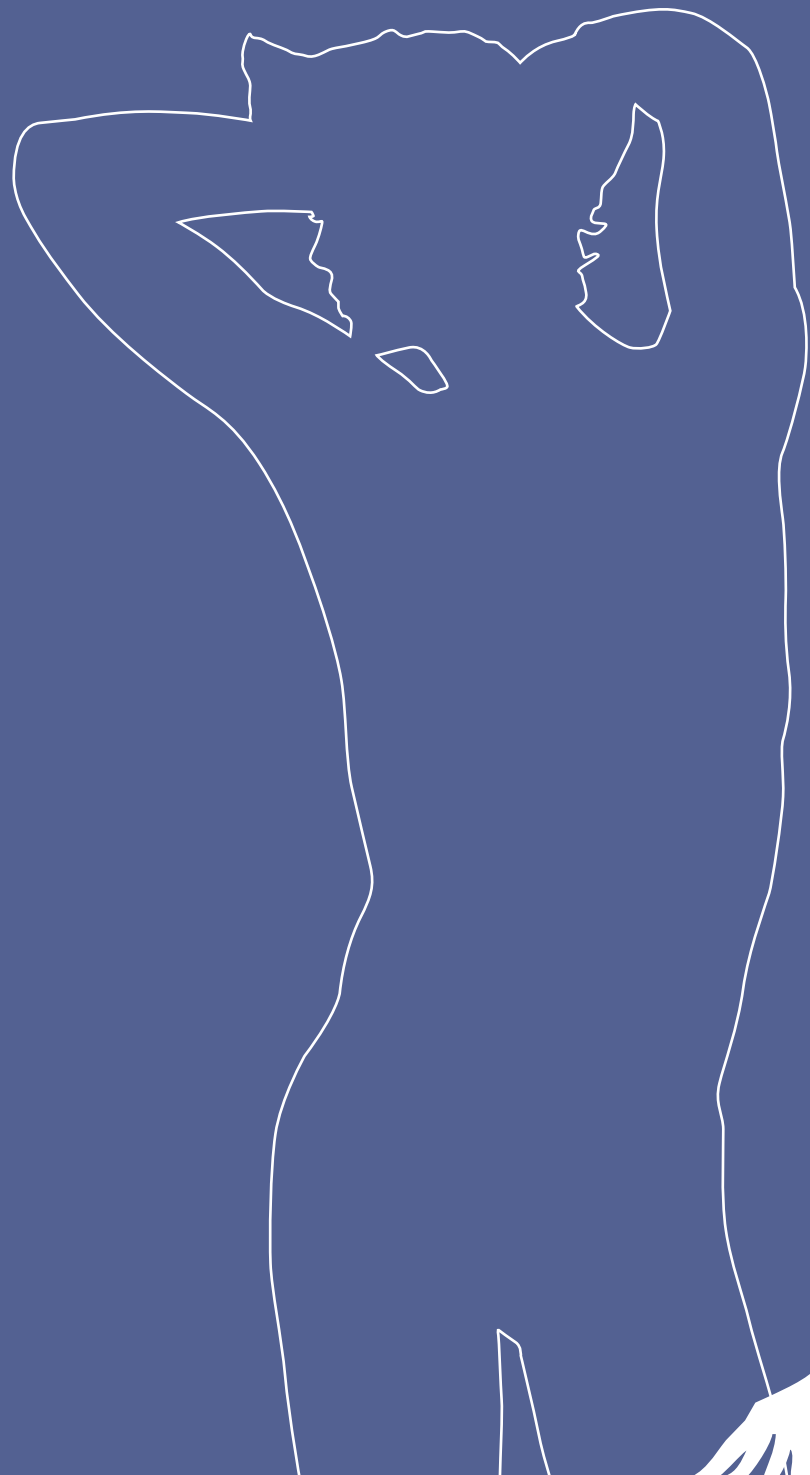




All Hindsgaul® products are produced by a process designed to minimize impact on the environment.

- Cast in a non toxic Polyurethane • Closed moulds • No glass or asbestos fibres • No fluoro-carbon (CFC) gases
- Water-based, non-toxic paints • Recyclable packing materials • Original Hindsgaul® design.

HINDSGAUL® by RETAILMENT A/S, Knud Bro Allé 10, DK-3660 Stenløse, Denmark,
Tel. +45 44 97 55 11, Fax +45 44 12 75, info@hindsgaul.com



hindsgaul®

by RETAILMENT A/S



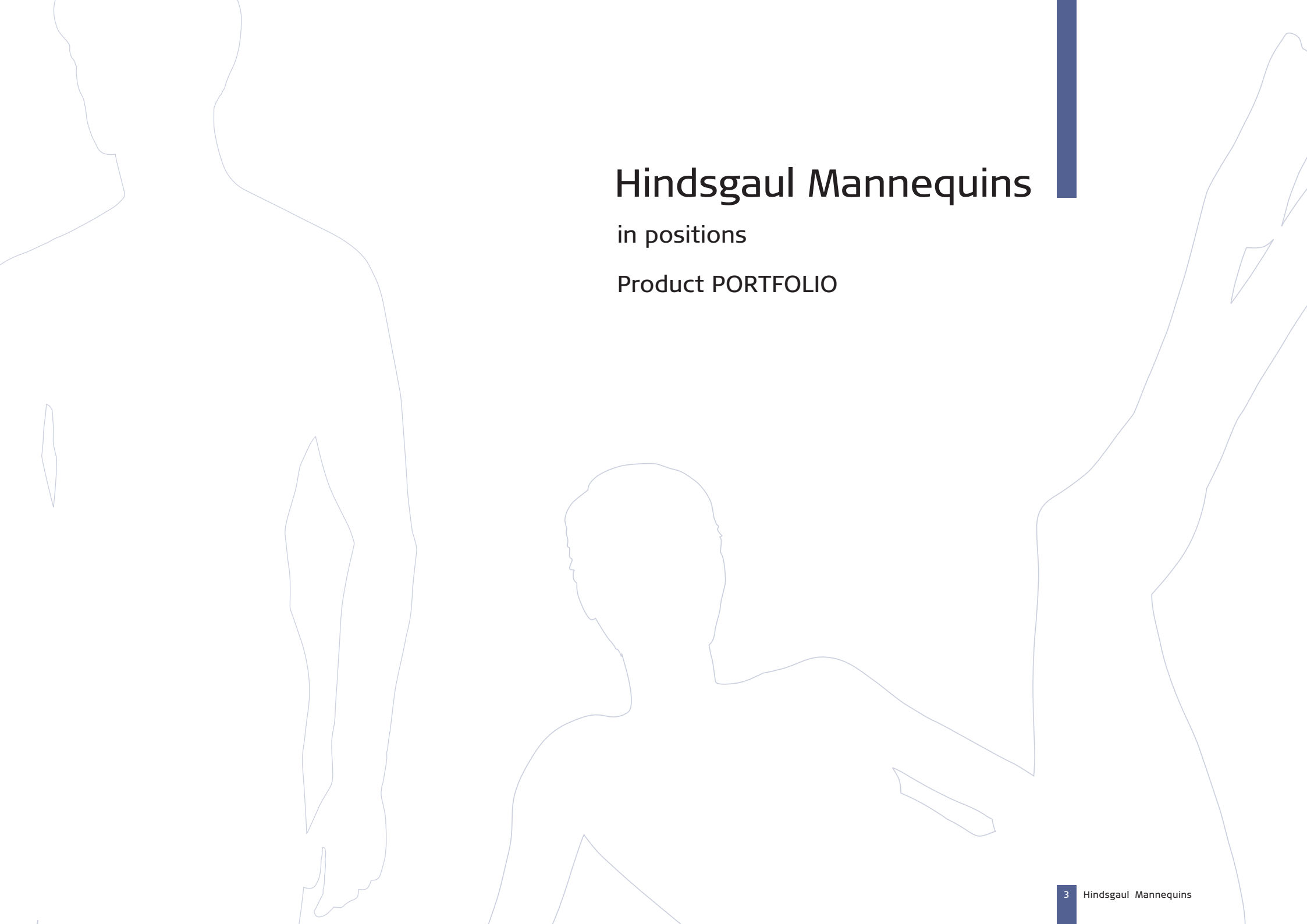




Hindsgaul Mannequins

in positions

Product PORTFOLIO



Hindsgaul Mannequins

Product PORTFOLIO VOLUME 1

Women

URbAN SHE	6-7
Image	8-9
Deauville	10-11
Elite	12
Real	13
Options/Assets	14-15
Elle	16
Edge	17
Intuition	18-20
Petite	21
Ninety degrees	22-23
+Size	24
Vega Stylised	25
Flow Stylised Woman	26

Men

Christian	28-31
URbAN	32-33
Expression	34-35
Retro 40+	36
Man XXL	37
Flow Stylised Man	38

Youngsters

NZ Teenagers	40-41
Headless & support options	42
Specifications	43-44

Youngsters

NZ Teenagers



8508-293



8509-293



8511-139



8513-140



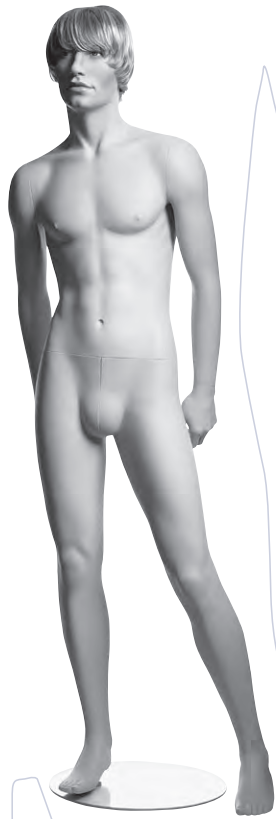
8514-140



NZ Teenagers



815-290



816-290



810-137



814-136



Headless & support options



Headless, women

HEADLESS OPTIONS

All positions shown are also available headless.

Alle gezeigten Positionen sind auch ohne Kopf lieferbar.



Headless, men



Woman supported by foot-spike



Woman supported by calf-spike

SUPPORT OPTIONS

Calf-spike support option allows the customer to present shoes.

Die Wadendorn-Option ermöglicht eine Präsentation mit Schuhen.



Man supported by foot-spike



Man supported by calf-spike

URBAN SHE SPECIFICATIONS	
Height/Höhe	179 cm/5'10"
Collar/Kragen	30 cm/12"
Chest/Büste	88 cm/35"
Waist/Taille	63 cm/25"
Hip/Hüfte	90 cm/35"
Inside Leg/Schrittlänge	83 cm/33"
Shoe size/Schuhgröße	Cont. 38/UK 5 /US 7½
Heel Height/Absatzhöhe	7½ cm/3"
(all dimensions are approximate)	

ELITE SPECIFICATIONS	
Height/Höhe Low heel	178 cm/5'10"
Height/Höhe *High Heel	*182 cm/6'
Collar/Kragen	30 cm/12"
Chest/Büste	88 cm/35"
Waist/Taille	65 cm/25"
Hip/Hüfte	92 cm/36"
Inside Leg/Schrittlänge	85 cm/34"
Shoe size/Schuhgröße	Cont. 38/UK 5/US 7½
Heel Height/Absatzhöhe Low heel	½ cm/¾"
Heel Height/Absatzhöhe *High Heel	*7½ cm/3"
(all dimensions are approximate)	

ELLE SPECIFICATIONS	
Height/Höhe	180 cm/5'11"
Chest/Büste	30 cm/12"
Chest/Büste	88 cm/35"
Waist/Taille	68 cm/27"
Hip/Hüfte	93 cm/37"
Inside Leg/Schrittlänge	85 cm/34"
Shoe size/Schuhgröße	Cont. 39/UK 6 /US 8
Heel Height/Absatzhöhe	7½ cm/3"
(all dimensions are approximate)	

PETITE SPECIFICATIONS	
Height/Höhe	165 cm/5'5"
Collar/Kragen	30 cm/12"
Chest/Büste	81 cm/32"
Waist/Taille	62 cm/24½"
Hip/Hüfte	88 cm/34½"
Inside Leg/Schrittlänge	75 cm/29½"
Shoe size/Schuhgröße	Cont. 37/UK 4½/US 6½
Heel Height/Absatzhöhe	7½ cm/3"
(all dimensions are approximate)	

IMAGE SPECIFICATIONS	
Height/Höhe	180 cm/5'11"
Collar/Kragen	30 cm/12"
Chest/Büste	86 cm/34"
Waist/Taille	60 cm/24"
Hip/Hüfte	88 cm/35"
Inside Leg/Schrittlänge	85 cm/34"
Shoe size/Schuhgröße	Cont. 39/UK 6 /US 8
Heel Height/Absatzhöhe	9 cm/3"
(all dimensions are approximate)	

REAL WOMAN SPECIFICATIONS	
Height/Höhe	177 cm/5'10"
Collar/Kragen	30 cm/12"
Chest/Büste	86 cm/34"
Waist/Taille	62 cm/24"
Hip/Hüfte	87 cm/34"
Inside Leg/Schrittlänge	82 cm/32"
Shoe size/Schuhgröße	Cont. 39/UK 6 /US 8
Heel Height/Absatzhöhe	1½ cm/¾"
(all dimensions are approximate)	

EDGE SPECIFICATIONS	
Height/Höhe	176 cm/5'10"
Chest/Büste	83 cm/33"
Chest/Büste	74 cm/29"
Waist/Taille	60 cm/23½"
Hip/Hüfte	90 cm/36"
Inside Leg/Schrittlänge	86 cm/34"
Shoe size/Schuhgröße	39/UK 6/US 8
Heel Height/Absatzhöhe	1½ cm/35"
(all dimensions are approximate)	

NINETY DEGREES SPECIFICATIONS	
Height/Höhe	181 cm/5'11"
Collar/Kragen	30 cm/12"
Chest/Büste	85 cm/34"
Waist/Taille	62 cm/24"
Hip/Hüfte	90 cm/35"
Inside Leg/Schrittlänge	86 cm/33"
Shoe size/Schuhgröße	Cont. 39/UK 6 /US 8
Heel Height/Absatzhöhe	5 cm/2"
(all dimensions are approximate)	

DEAUVILLE	
Height/Höhe	182 cm/5'12"
Collar/Kragen	30 cm/12"
Chest/Büste	84 cm/33"
Waist/Taille	62 cm/24½"
Hip/Hüfte	90 cm/35½"
Inside Leg/Schrittlänge	85 cm/33½"
Shoe size/Schuhgröße	Cont. 39/UK 6/US 8
Heel Height/Absatzhöhe	6 cm/2½"
(all dimensions are approximate)	

OPTIONS/ASSETS SPECIFICATIONS	
Height/Höhe	176 cm/5'10"
Collar/Kragen	31 cm/12"
Chest/Büste	88cm/34½"
Waist/Taille	65 cm/25½"
Hip/Hüfte	90 cm/35½"
Inside Leg/Schrittlänge	87 cm/34"
Shoe size/Schuhgröße	Cont. 38/UK 7½ /US 5
Heel Height/Absatzhöhe Low heel	5 cm/2"
(all dimensions are approximate)	

INTUITION SPECIFICATIONS	
Height/Höhe	176 cm/5'9"
Collar/Kragen	30 cm/12"
Chest/Büste	90 cm/35"
Waist/Taille	65 cm/25½"
Hip/Hüfte	90 cm/35"
Inside Leg/Schrittlänge	80 cm/31½"
Shoe size/Schuhgröße	Cont. 38/UK 5 /US 7½
Heel Height/Absatzhöhe	7½ cm/3"
(all dimensions are approximate)	

+ SIZE SPECIFICATION	
Height/Höhe	178 cm/5'10"
Collar/Kragen	37 cm/15"
Chest/Büste	110 cm/43½"
Waist/Taille	85 cm/33½"
Hip/Hüfte	115 cm/45"
Inside Leg/Schrittlänge	79 cm/31"
Shoe size/Schuhgröße	Cont. 38/UK 6/US 10½
Heel Height/Absatzhöhe	7½ cm/3"
(all dimensions are approximate)	

VEGA SPECIFICATIONS	
Height/Höhe	175 cm/5'9"
Collar/Kragen	30 cm/12"
Chest/Büste	83 cm/33½"
Waist/Taille	61 cm/24"
Hip/Hüfte	87 cm/34"
Inside Leg/Schrittlänge	80 cm/31"

CHRISTIAN	
Height/Höhe	189 cm/6'3"
Collar/Kragen	38 cm/15"
Chest/Büste	99 cm/39"
Waist/Taille	80 cm/31½"
Hip/Hüfte	94 cm/37"
Inside Leg/Schrittlänge	92 cm/36"
Shoe size/Schuhgröße	Cont. 44/UK 10/US 10½
Jeans size / Jeans Größe	32/34
(all dimensions are approximate)	

RETRO 40+	
Height/Höhe	186 cm/6'2"
Collar/Kragen	38 cm/15"
Chest/Büste	99 cm/39"
Waist/Taille	80 cm/32"
Hip/Hüfte	90 cm/35½"
Inside Leg/Schrittlänge	86 cm/34"
Shoe size/Schuhgröße	Cont. 44/UK 10/US 10½
(All dimensions are approximate)	

NZ SPECIFICATIONS (SHE/SIE)	
Height/Höhe	172 cm/5'8"
Collar/Kragen	30 cm/12"
Chest/Büste	86 cm/34"
Waist/Taille	62 cm/24½"
Hip/Hüfte	89 cm/35"
Inside Leg/Schrittlänge	83 cm/32½"
Shoe size/Schuhgröße	Cont. 39/UK 6 /US 8
Heel Height/Absatzhöhe	1,5 cm/¾"
(all dimensions are approximate)	

FLOW WOMEN SPECIFICATIONS – SPECIAL	
Height/Höhe Low heel	173 cm/5'8"
Collar/Kragen	31 cm/12"
Chest 1/Büste 1	89 cm/35"
Chest 2/Büste 2	79 cm/31"
Waist/Taille/	63 cm/25"
Hip/Hüfte	90 cm/35"
Inside Leg/Schrittlänge	80 cm/31½"
Shoe size/Schuhgröße	Cont. 39/UK 6/US 8
Heel Height/Absatzhöhe	7½ cm/3"
Weight/Gewicht	12 kg
(all dimensions are approximate)	

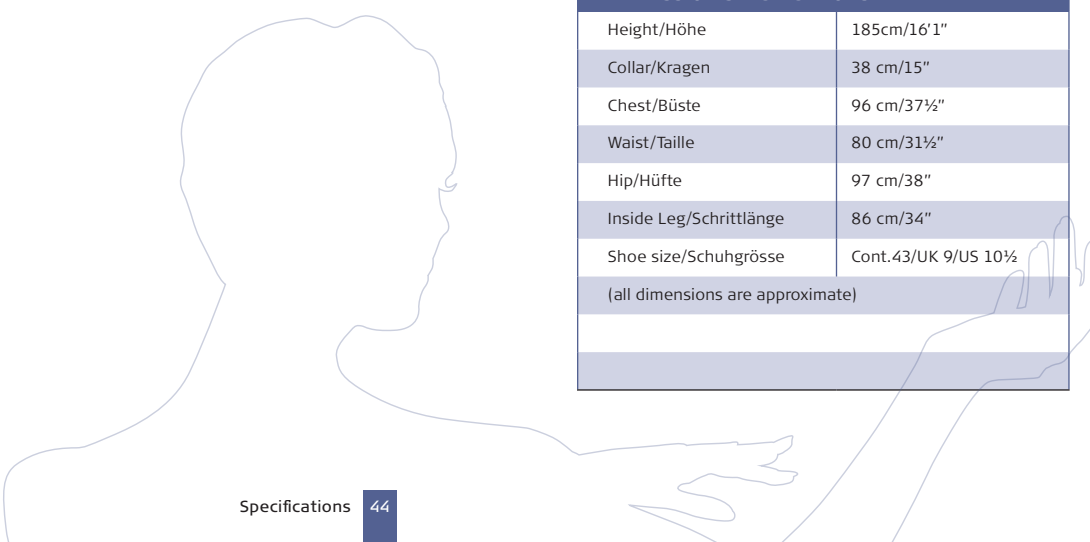
URBAN SPECIFICATIONS	
Height/Höhe	187 cm/6'2"
Collar/Kragen	38 cm/15"
Chest/Büste	100 cm/40"
Waist/Taille	80 cm/31½"
Inside Leg/Schrittlänge	90 cm/35"
Shoe size/Schuhgröße	Cont. 44/UK 10/US 10½
(all dimensions are approximate)	

MAN XXL SPECIFICATIONS	
Height/Höhe	189 cm/6'2½"
Collar/Kragen	44 cm/17"
Chest/Büste	118 cm/46"
Waist/Taille	104 cm/41"
Inside Leg/Schrittlänge	85 cm/33"
Shoe size/Schuhgröße	Cont. 44/UK 10/US 10½
(all dimensions are approximate)	

NZ SPECIFICATIONS (HE/ER)	
Height/Höhe	177 cm/5'10"
Collar/Kragen	36½ cm/14½"
Chest/Büste	91 cm/36"
Waist/Taille	71 cm/28"
Inside Leg/Schrittlänge	81 cm/32"
Shoe size/Schuhgröße	Cont. 44/UK 10 /US 10½
Heel Height/Absatzhöhe	1,5 cm/¾"
(all dimensions are approximate)	

EXPRESSION SPECIFICATIONS	
Height/Höhe	185cm/6'1"
Collar/Kragen	38 cm/15"
Chest/Büste	96 cm/37½"
Waist/Taille	80 cm/31½"
Hip/Hüfte	97 cm/38"
Inside Leg/Schrittlänge	86 cm/34"
Shoe size/Schuhgröße	Cont.43/UK 9/US 10½
(all dimensions are approximate)	

FLOW MENS SPECIFICATIONS – SPECIAL	
Height/Höhe	185 cm/6'1"
Collar/Kragen	38 cm/15"
Chest/Büste	101 cm/40"
Waist/Taille	80 cm/32"
Hip/Hüfte	94 cm/37"
Inside Leg/Schrittlänge	86 cm/34"
Shoe size/Schuhgröße	Cont. 44/UK 10/US 10½
Heel Height/Absatzhöhe	3½ cm/1½"
Weight/Gewicht	12 kg
(All dimensions are approximate)	



Standard body colours

Below is our current standard body colours

*NOTE: Colours shown might diverge from original due to reproduction-technique.



Africa



Sahara



Latin



California



Scandinavia



Europe



Silk white



High gloss white



Ivory



Silk black



High gloss black

Other colours are available.
Special colours can be provided
on request against surcharge.
Please contact us for further
information and quotation.

hindsgaul[®]

by RETAILMENT A/S



www.hindsgaul.com